

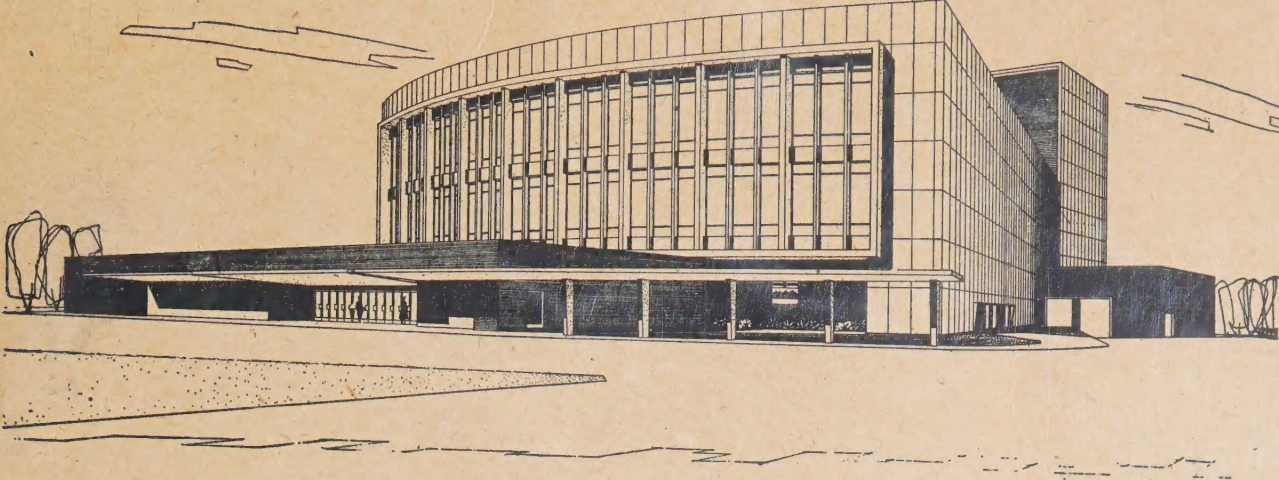
Alberta

CA2ALPM  
54J71

CA2 ALPM 1954J71  
Jubilee Auditorium May 4, 1954.



3 3398 00141 4696



LIBRARY  
VAULT 19

# JUBILEE AUDITORIUM

THIS ARTIST'S CONCEPTION ILLUSTRATES ONE  
OF TWO NEW AUDITORIUMS LOCATED IN  
CALGARY AND EDMONTON

Digitized by the Internet Archive  
in 2022 with funding from

Legislative Assembly of Alberta - Alberta Legislature Library

## Province of Alberta

### JUBILEE AUDITORIUMS

---

Two similar auditoriums, at Calgary and Edmonton, were ordered by the Government to commemorate the 50th Anniversary of Alberta as a Province. That at Calgary is set on 23 acres of land at the Institute of Technology and Art. The Edmonton structure stands on 13 acres near the University. Edmonton site provides parking space for 850 cars. Calgary's site can accommodate 1,000 cars.

Announcing the decision to provide these auditoriums, Premier E. C. Manning said on May 4, 1954: "The need for such centres has long been apparent. The Government believes they will be both appropriate and practical memorials to the fifty years of development....and to those pioneers whose foresight and fortitude made that progress possible." He said they would serve all the people for their cultural convenience.

The following pages contain a "visitor's guide" description of the general design, and facilities of the Provincial Auditoriums, with copies of the architects' drawings.



## Provincial Jubilee Auditoriums

### Edmonton and Calgary

GENERAL DESIGN: The auditorium is fan-shaped, with a rectangular main entrance structure. The lobby is 160 feet wide. It contains a three-wicket ticket office, capable of accommodating 3,000 persons in 20 minutes. From the main lobby extend the various cloak rooms, lounge and refreshment areas and stairs leading to the grande circle and the balcony. A lengthy covered walk outside the entrance will permit cars to discharge passengers before being taken to the parking areas. The sidewalk will be heated and snow-free in winter weather.

The AUDITORIUM proper is 80 feet wide at the stage, broadening to 160 feet at the rear. Average height from floor to acoustic ceiling is 50 feet. FRONT STALLS will seat 1,300 persons, grande circle 760 persons, and balcony 640. Total seating capacity 2,700. *2695* *757*

Provision is made for reducing the apparent size of both stage and auditorium to suit smaller productions than can fill the capacities of stage and hall.

STAGE PRESENTATIONS in the main hall can be televised and presented in other parts of the building to overflow audiences, through closed circuit television.

SPECIAL RAMPS to permit invalids and handicapped people to be wheeled in have been provided.

An ORCHESTRA PIT accommodating 50 musicians is provided at the foot of the stage. Beneath the conductor's podium, unseen by the audience, is a panel for the lighting engineer. The specially designed lighting system will permit the pre-setting of special lighting effects and combinations. The turn of a switch will suffice to make any lighting change plotted by the producers of any shows.

The STAGE AREA is 120 feet wide and 48 feet deep. Depth can be increased to 65 feet by utilizing the covered orchestra pit. The proscenium is 36 feet high and 76 feet wide.

Above the stage rears the 120 foot fly loft, which includes the traditional gridiron for stage rigging -- 50 sets of lines in all, capable of hoisting and lowering set pieces, drops, borders, backcloths and all the other traditional backstage necessities. Also installed is a flying light bridge and an overhead fly gallery for the stage hands employed there. A full system of stage traps is also provided -- thus making one of the largest and best equipped stages in North America. It can handle everything from a single act to grand opera.

The scenery port, workshops and staff rooms complete the backstage picture. Included are broadcasting and rehearsal rooms.

Special lighting effects have been arranged throughout the building. In the event of a power failure, an emergency plant is ready to take over immediately.

---

On the LOWER LEVEL, reached from the main entrance, a service kitchen capable of handling 2,000 persons is installed. Also on this level are four SOCIAL ROOMS, for young peoples' gatherings, and for stage experimental plays and chamber music concerts. This latter will accommodate 500 people. A banquet room is also provided at this level.

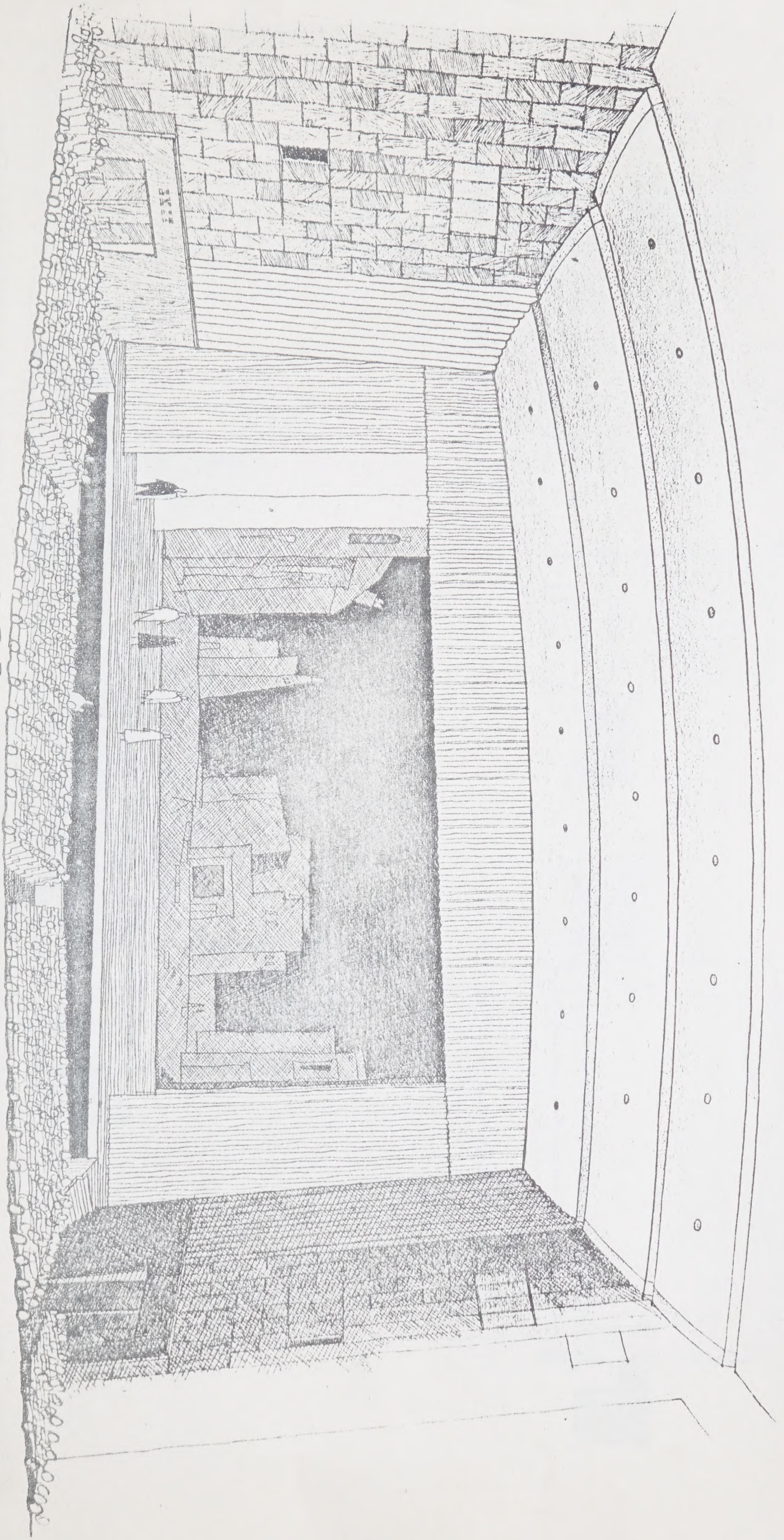
---


The entire auditorium was designed by the Department of Public Works' architectural office, after consultations and inspections elsewhere. Such experts as Leopold Stokowski and Sir Ernest McMillan were called on for advice, as well as representatives of symphony and operatic groups in Calgary and Edmonton. Visits were paid to great auditoriums in Europe and Canada before the final plans were worked out. The object was to produce the best -- meaning the most appropriate for the multiple purpose of vocal, instrumental and similar public activities. All calculations in connection with technical problems of acoustics, heating, lighting and air conditioning were cross-checked by the National Research Council.

Containing every modern convenience that has been possible to install, the auditoriums will undoubtedly stand on a par with a very small number of select structures of this kind in North America. In some instances they are unique. Alberta's people are proud of them.



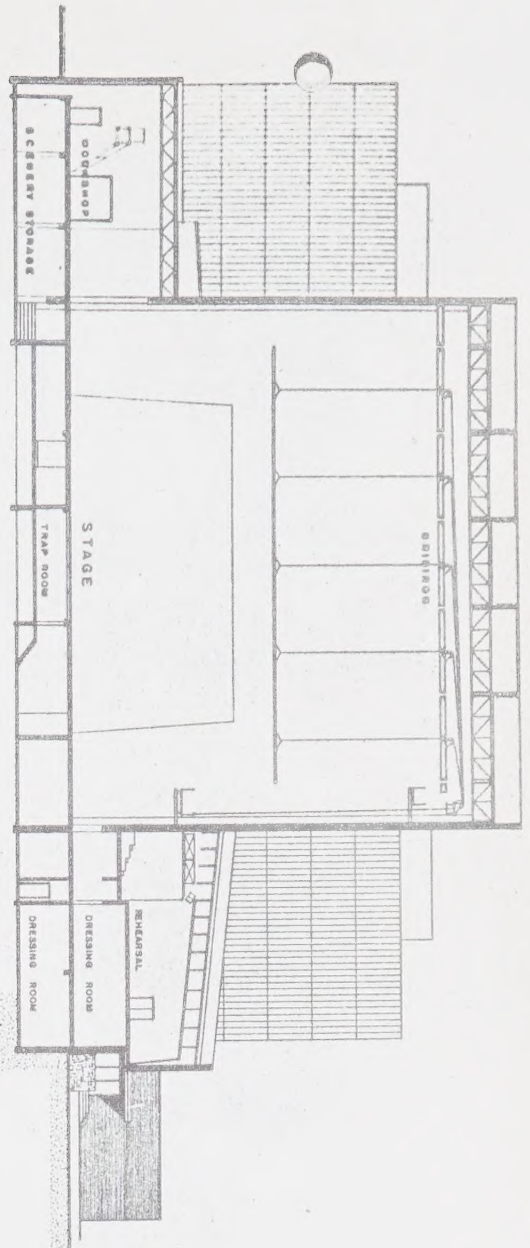
AUDITORIUM  
PROPER



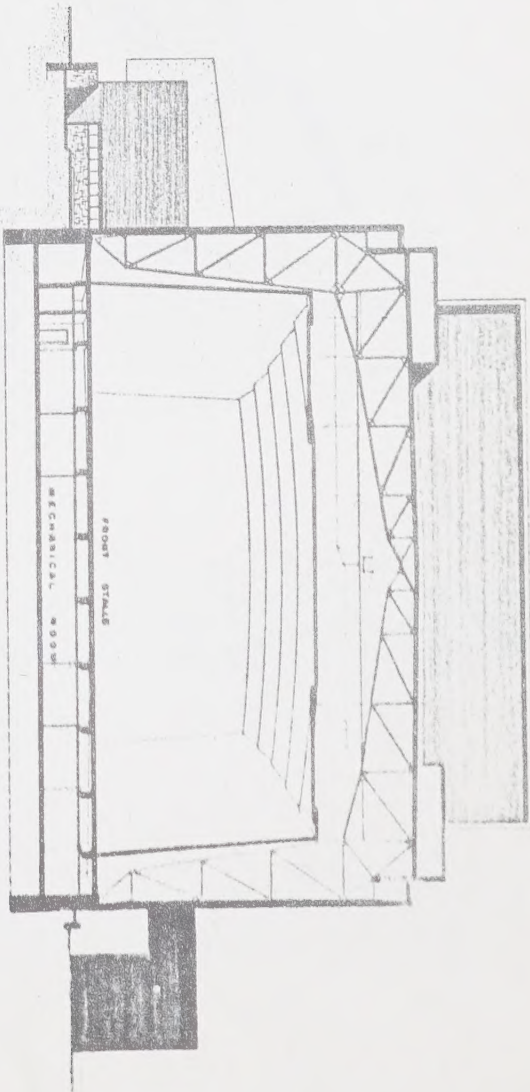


Digitized by the Internet Archive  
in 2022 with funding from  
Legislative Assembly of Alberta - Alberta Legislature Library

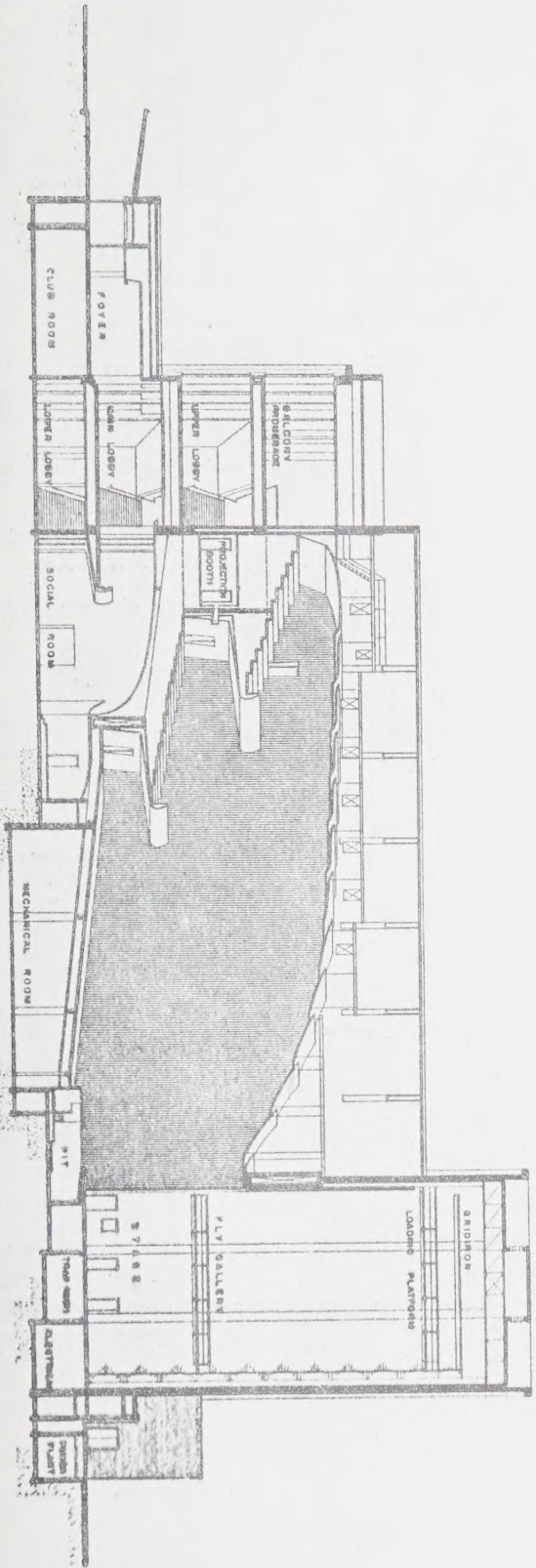




CROSS SECTION THRU STAGE

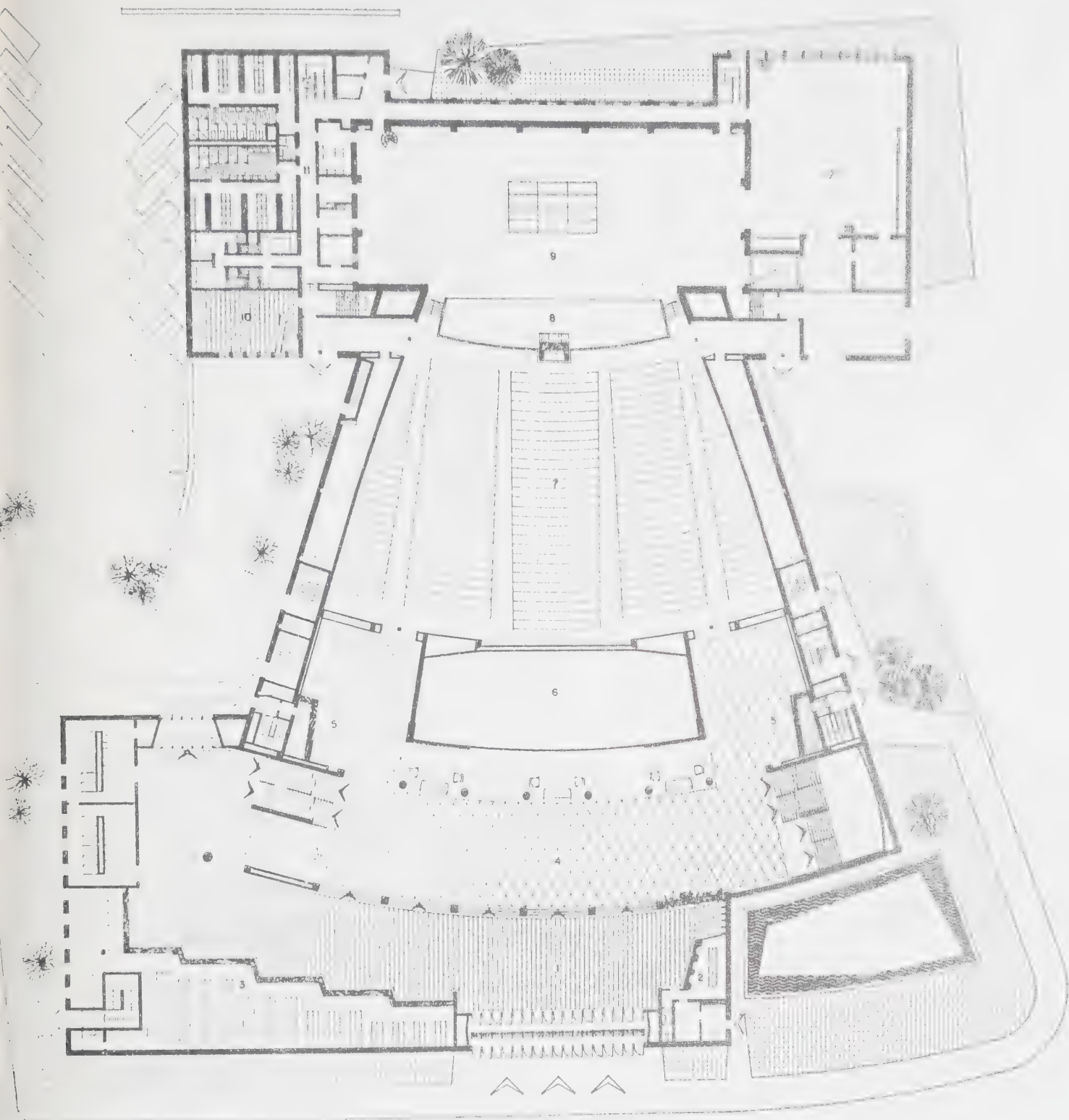


CROSS SECTION THRU AUDITORIUM PROPER

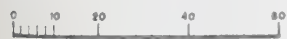


LONGITUDINAL SECTION



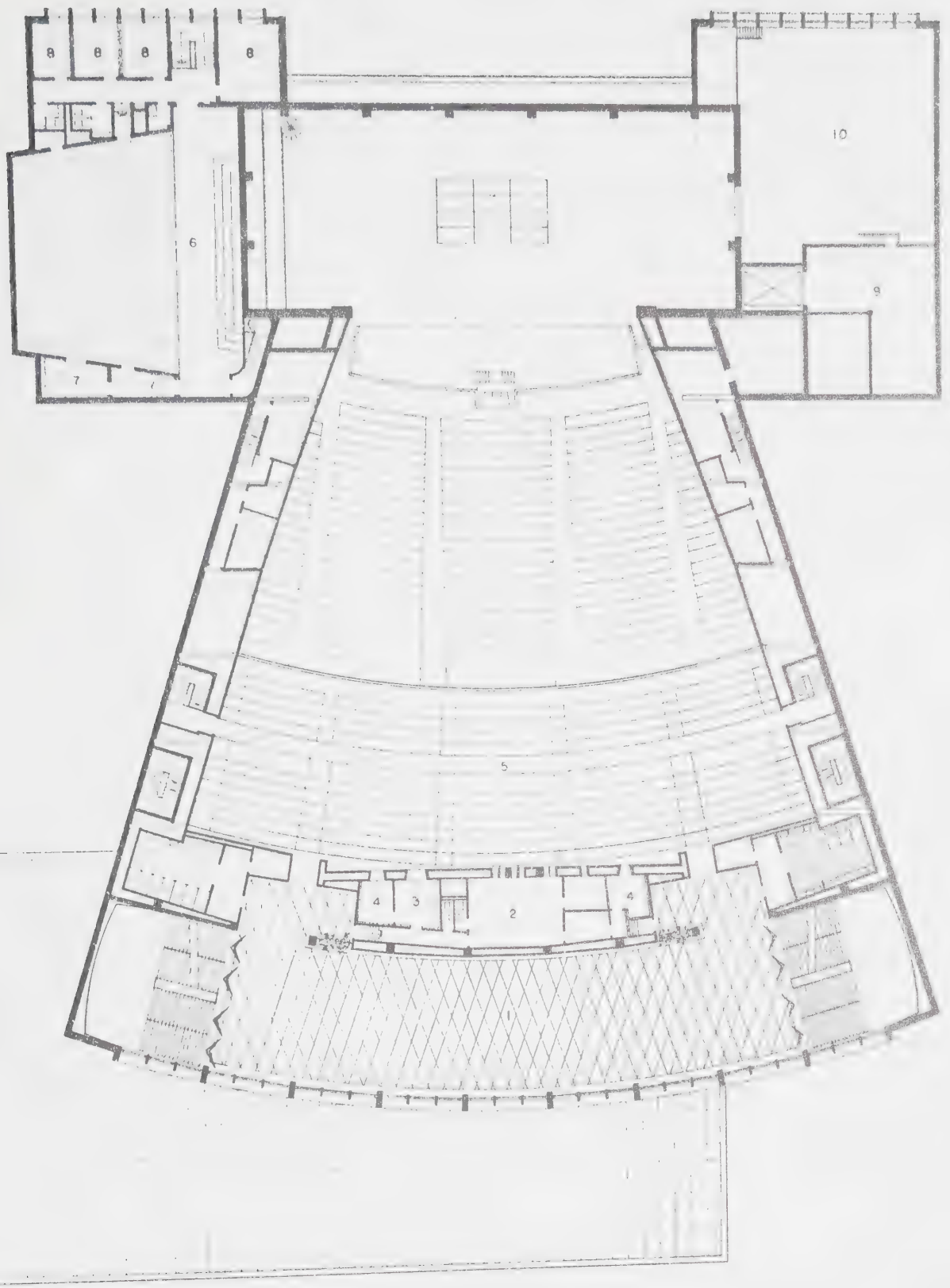


MAIN ENTRANCE LEVEL



- |                 |                             |                           |                   |
|-----------------|-----------------------------|---------------------------|-------------------|
| 1 FOYER         | 4 MAIN LOBBY                | 7 FRONT STALLS 1000 SEATS | 10 GREEN ROOM     |
| 2 TICKET OFFICE | 5 CONCESSIONS               | 8 ORCHESTRA PIT           | 11 DRESSING SUITS |
| 3 CLOAKS        | 6 UPPER PART OF SOCIAL ROOM | 9 STAGE                   | 12 WORKSHOPS      |





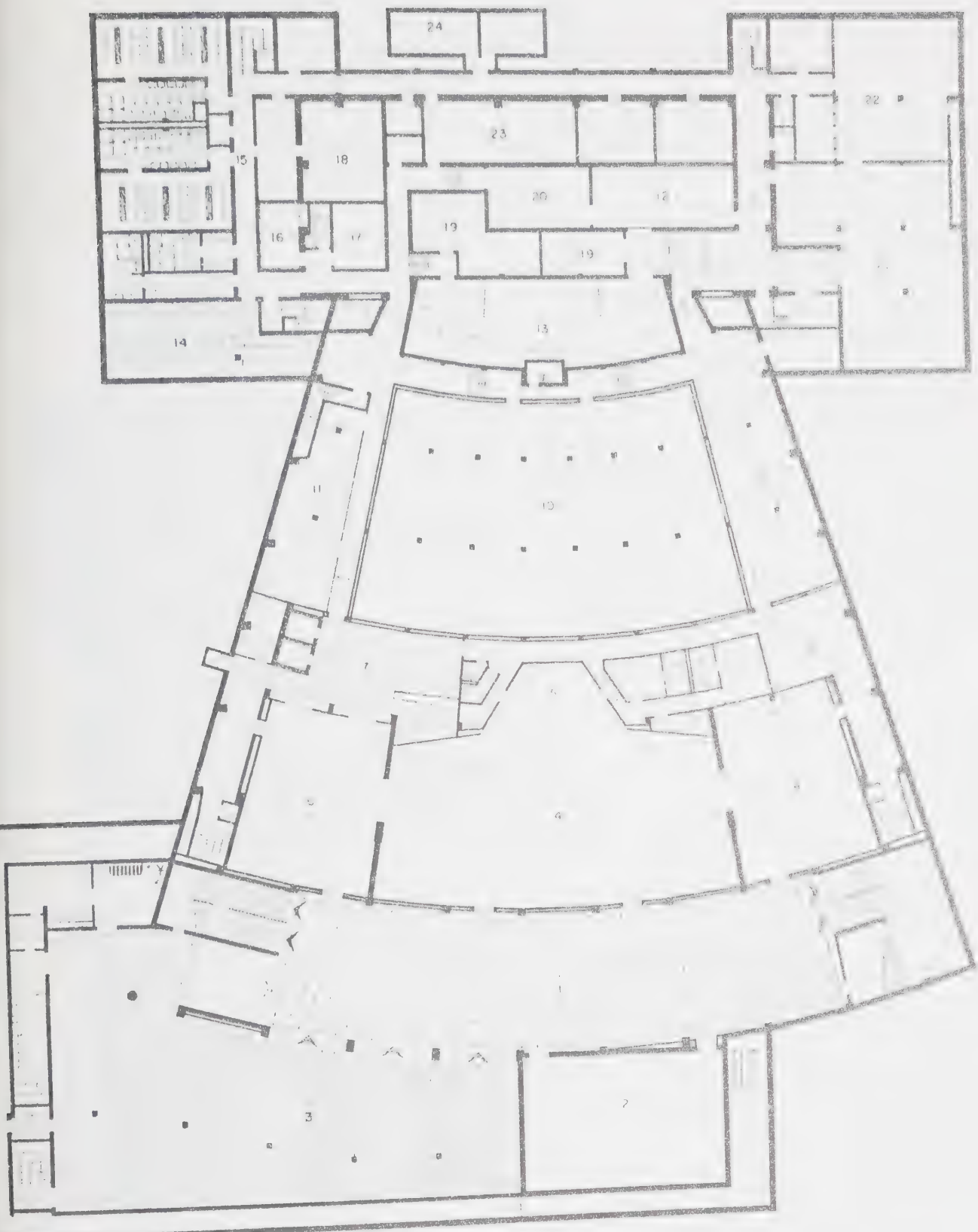
UPPER LOBBY LEVEL



INDEX

- |   |                           |
|---|---------------------------|
| 1 UPPER LOBBY                                       | 6 REHEARSAL STAGE         |
| 2 PROJECTION SUITE                                  | 7 BROADCASTING ROOM       |
| 3 SOUND CONTROL ROOM                                | 8 PRACTICE ROOMS          |
| 4 RADIO AND TV BOOTHS                               | 9 UPPER STORAGE           |
| 5 GRAND CIRCLE 760 SEATS<br>BALCONY ABOVE 640 SEATS | 10 UPPER PART OF WORKSHOP |





SOCIAL ROOM LEVEL



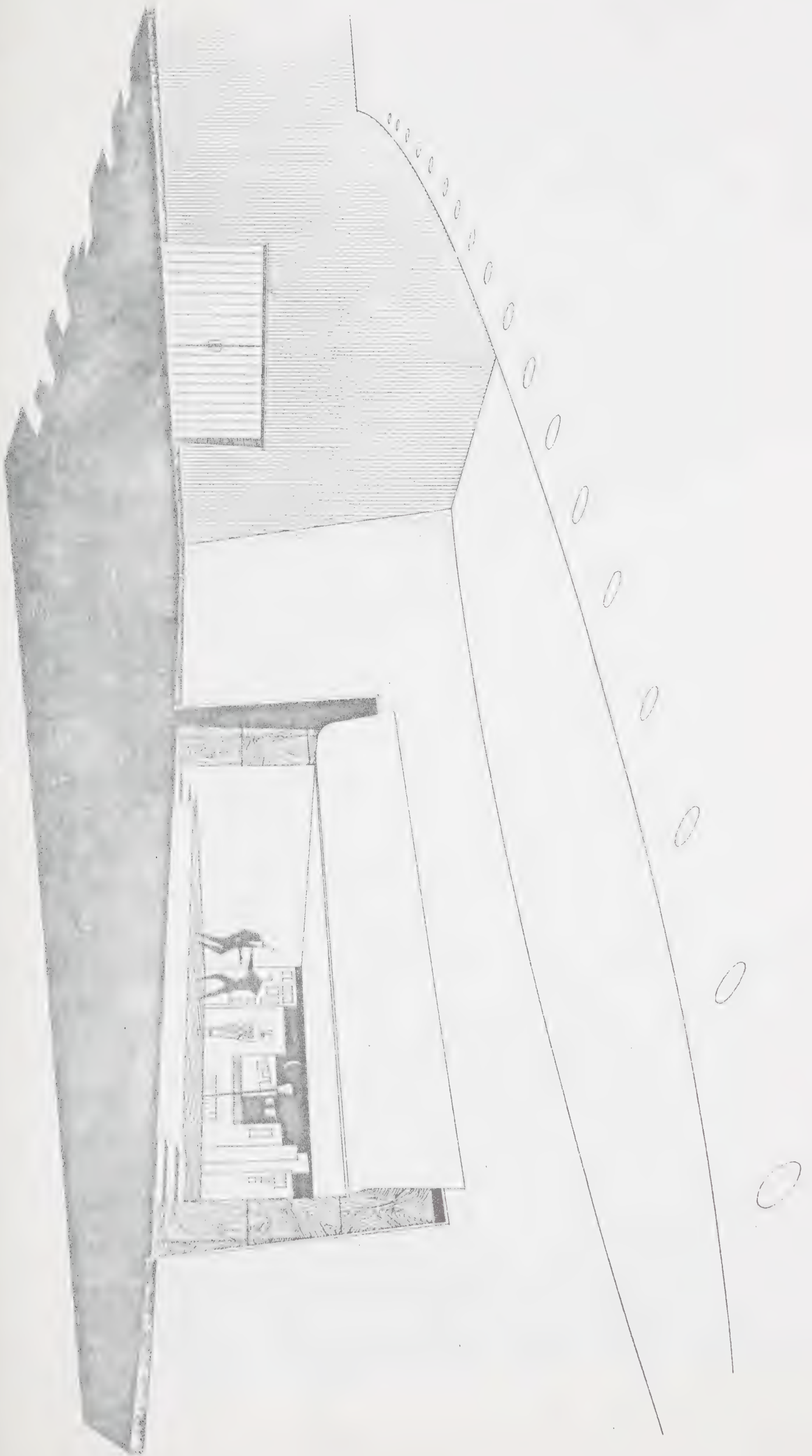
INDEX

- |                |                     |                     |                       |
|----------------|---------------------|---------------------|-----------------------|
| 1 LOWER LOBBY  | 7 SERVICE KITCHEN   | 11 ORCHESTRA PIT    | 19 INSTRUMENT STORAGE |
| 2 CLUB ROOM    | 8 ASSEMBLY ROOM     | 14 MUSICIAN'S ROOM  | 20 TRAP ROOM          |
| 3 EXHIBITIONS  | 9 CHAIR STORAGE     | 15 DRESSING SUITE   | 21 SCENERY DOCKS      |
| 4 SOCIAL ROOM  | 10 MECHANICAL ROOM  | 16 CONDUCTOR'S ROOM | 22 PRODUCTION STUDIO  |
| 5 PLATFORM     | 11 AIR CONDITIONING | 17 MUSIC LIBRARY    | 23 ELECTRICAL         |
| 6 BANQUET ROOM | 12 GENERAL STORAGE  | 18 COSTUME SHOP     | 24 EMERGENCY PLANT    |



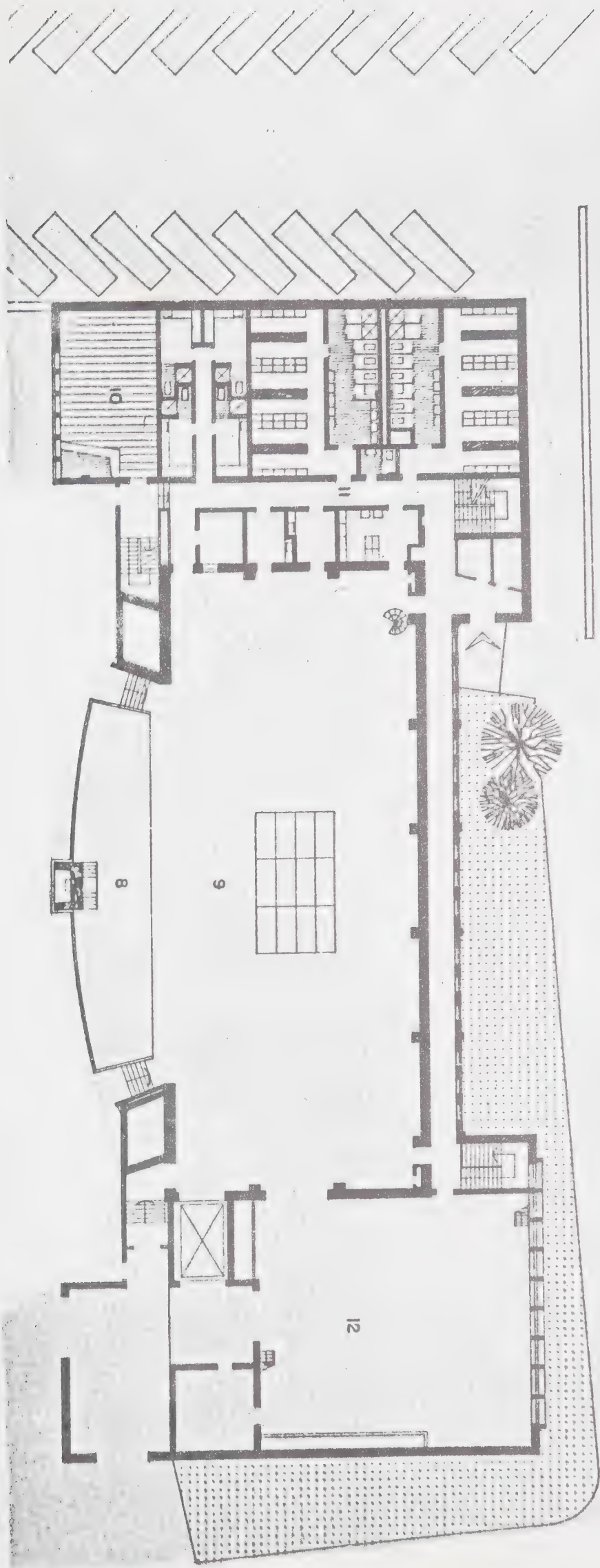


M A I N  
S O C I A L  
R O O M





ENLARGEMENT OF STAGE AREA





## STAGE FACILITIES

The stage is 120' wide and the 48' depth can be increased to 65' by using the covered orchestra pit as forestage. The proscenium opening, 76' by 36' high, may be reduced to any desired size by means of a portal, draw curtains, drops, tormentors and teasers to a minimum of 32' x 18'. All possible facilities, including 50 set lines for rigging, flying light bridge, a flexible and powerful lighting system and a trap area with removable panels, have been provided.

## SEQUENCE OF SETS FOR AUDITORIUM STAGE

1. Asbestos Curtain, Flex. Str. lift
2. Valance
3. Proscenium Curtain
4. Teaser & Tormentors
5. Light Bridge & Concert Borderlight
6. Grand Drape
7. Portal
8. Main Act Curtain
9. Picture Screen Frame & Screen
10. Spare Set
11. Spare Set
12. Main Ceiling Border
13. Main Side Masking Legs
14. Border Light #2
15. 1st Intermediate Ceiling Border
16. 1st Intermediate Side Masking Legs
17. 1st Intermediate Ceiling Draw Curtain
18. Spare Set
19. Spare Set
20. Spare Set
21. Spare Set
22. 2nd Intermediate Ceiling Border
23. 2nd Intermediate Side Masking Legs
24. 2nd Intermediate Draw Curtain
25. Spare Sets
26. Spare Set
27. Border Light #3
28. 3rd. Intermediate Ceiling Border
29. 3rd. Intermediate Side Masking Legs
30. 3rd. Intermediate Draw Curtain
31. Spare Set
32. Spare Set
33. Spare Set
34. Spare Set
35. Rear Ceiling Border
36. Rear Side Masking Legs
37. Rear Draw Curtain
38. Spare Set
39. Spare Set
40. Spare Set
41. Cyclorama Borderlight
42. Spare Set
43. Spare Set
44. Spare Set
45. Spare Set
46. Cyclorama
47. Spare Set
48. Spare Set
49. Spare Set
50. Spare Set.



## STAGE DRAPERIES

Contractor shall furnish and install the following stage drapery items.

1. One Pair Proscenium Draw Curtains
2. One Proscenium Valance Border
3. One Grand Drapery Border
4. One Teaser Border
5. Two Drapery Tormentors
6. Flippers
7. One Pair Close-In Curtains
8. One Pair Rear Curtains
9. One Pair Intermediate Curtains
10. Four Pairs of Side Legs
11. Four Overhead Masking Borders
12. One Cyclorama
13. Two Cyclorama Borders
14. One Hanson Gauze Drape
15. One Scrim Drop
16. One Stage Floor Cloth
17. Flame Proofing
18. Proscenium Portal

## STAGE LIGHTING

The main stage lighting control system is the Century-Izenour control scheme. With the C-1 Board all functions of both switching and dimming are accomplished by entirely electronic means. Seated at the Console, a single operator controls all the lighting circuits of the auditorium and stage. The Preset Panel enables him to remain always ten light cues ahead of the performance.

### LIST OF CIRCUITS FOR STAGE LIGHTING

Circuit Use	No. of Circuits	Wattage or Amperage of Circuit
Tormentors	16	1000 W
Footlights	15	15 A
Light Bridge	40	2000 W
	12	3000 W
2nd Border	12	3000 W
3rd Border	8	4000 W
	15	1500 W
4th Border	8	3500 W
	3	20 W
1st Bridge above orchestra	2	2000 W
2nd Bridge (F.O.H.)	12	2000 W
3rd Bridge (F.O.H.)	12	2000 W
Follow Spots	2	4000 W
Front of Balcony	8	2000 W
Fly Gallery Receptacle	4	20 A
Floor Rockets	44	20 A
	4	50 A
Work Lights	2	2000 W
TOTAL	219	





AUXILIARY STAGE LIGHTING AND EQUIPMENT

Quantity	Description
2	Beam Lights Century #1502
3	Black Lights Century #331
1	Linneback Lantern Century #1170
1	Projection Machine - Century #1174
	with 1 scenic effect device
6	Century #510 fresnelites
12	Century #3215
2	Super Kleigel lights #1174 with
	2 #17 color wheels
12	Century #392 portable footlights
500 ft.	2-#12 stage cable



DATE DUE  
DATE DE RETOUR

~~MAR 22 1991~~


NLR 178



ALBERTA

LEGISLATURE LIBRARY  
216 LEGISLATURE BUILDING  
EDMONTON, ALBERTA

